

Camera Familiarization: Part 2

One Variable at a Time

Depth of Field



Group f/64: 1930's San Francisco Bay Area photographers

The Members of Group f/64

- Ansel Adams
- Imogen Cunningham
- John Paul Edwards
- Sonya Noskowiak
- Henry Swift
- Willard Van Dyke
- Edward Weston

The contrast in this photo is very defined. It gives of an aura of foreboding and death.



Roaring Mountain, Yellowstone National Park



Ansel Adams



Imogen Cunningham



William Van Dyke



Edward Weston



4 Ansel Adams



Sonya Noskowiak "John Steinbeck"

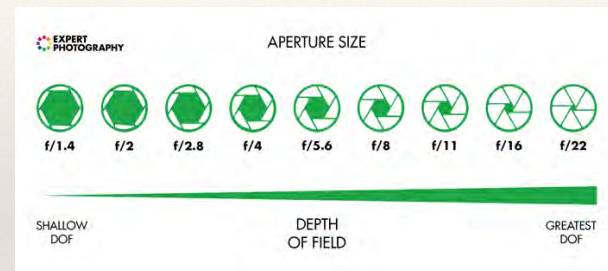


Edward Weston

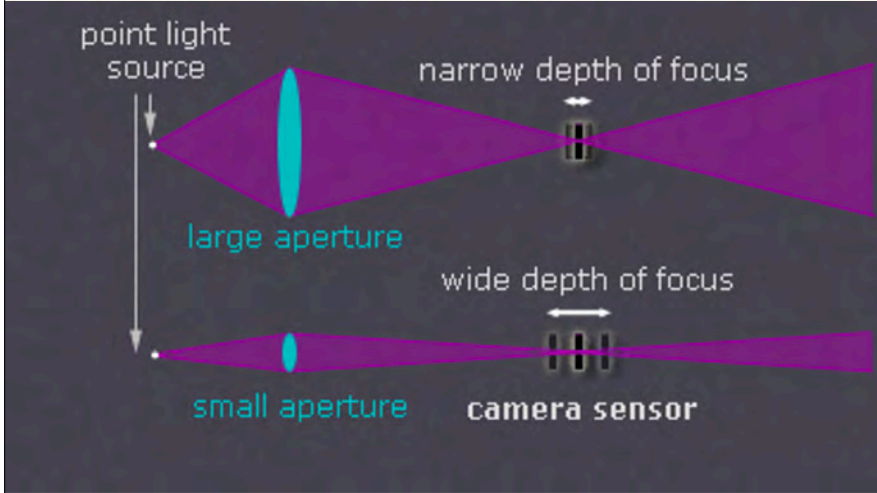


Imogen Cunningham

aperture



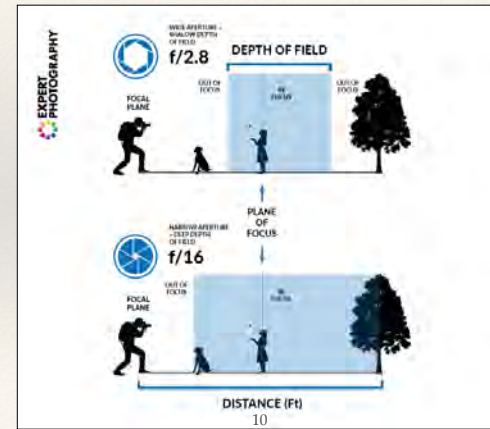
from: cambridgeincolour.com (courtesy of JK)



9

What is depth of field (DOF)?

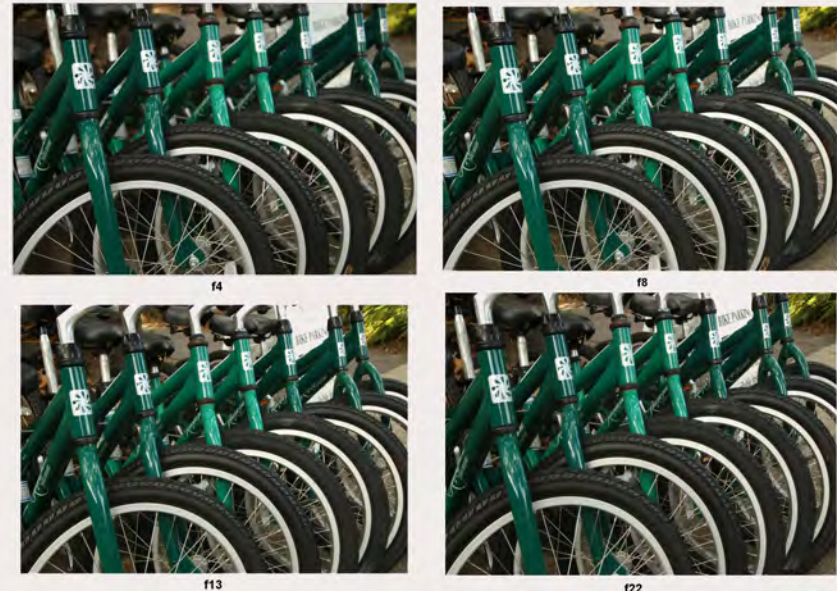
It is the distance between the closest and farthest objects in a photo that appears acceptably sharp.



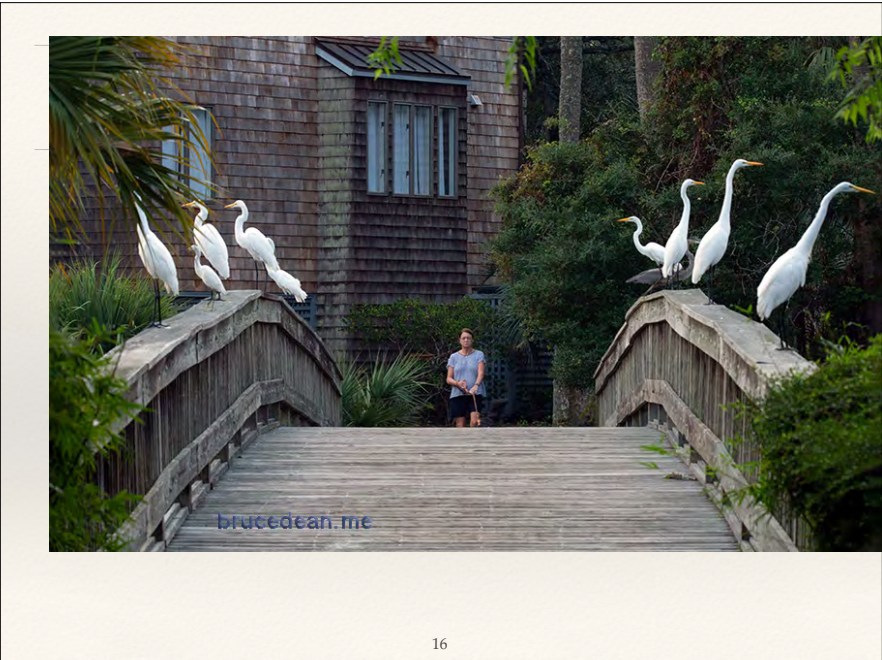
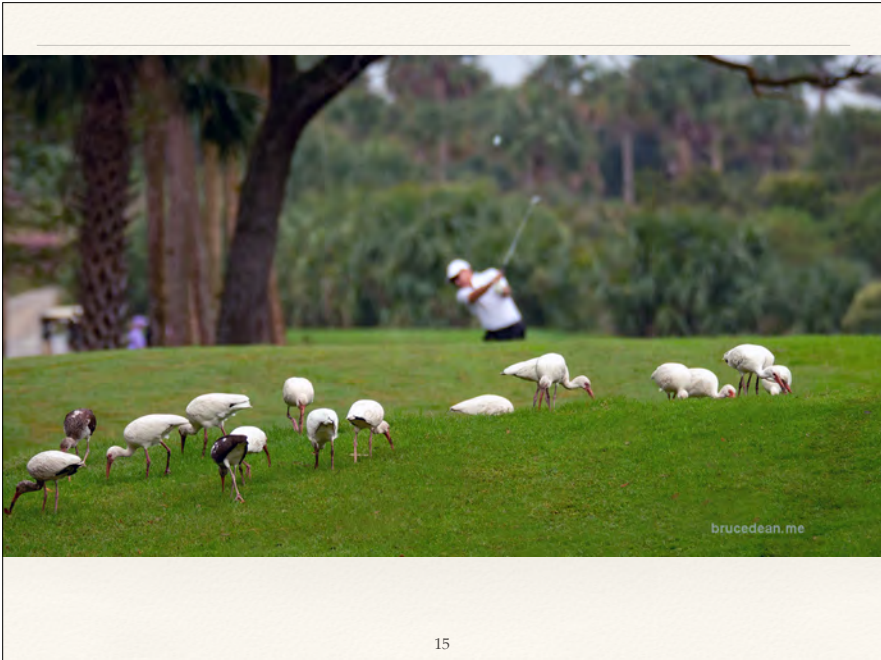
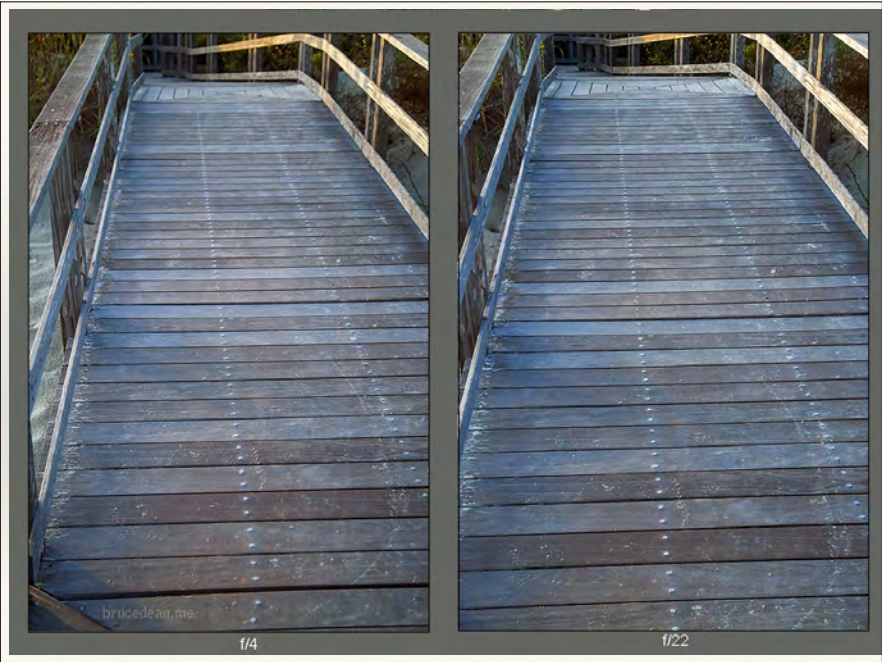
F/2.8 - F/16 comparison



11



brucedean.me





brucedean.me

shot at F/9



brucedean.me